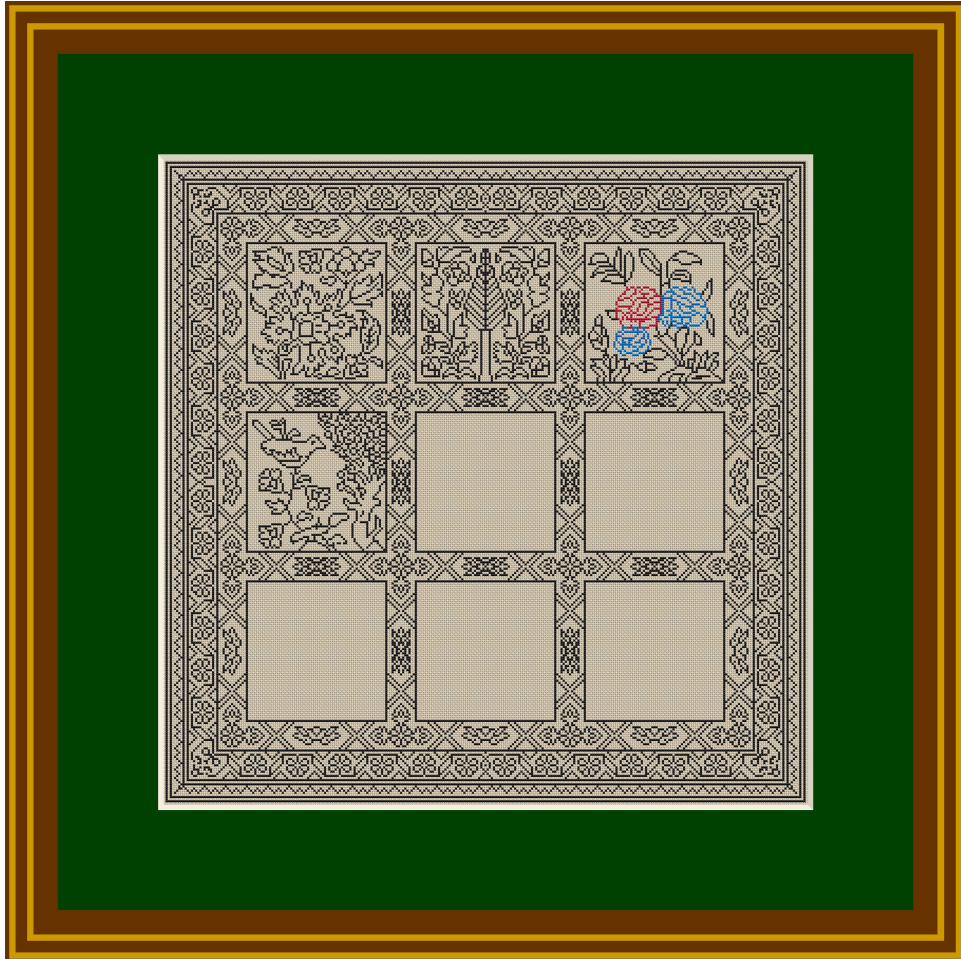


Natalia's Fine Needlework

**MAY 2021**

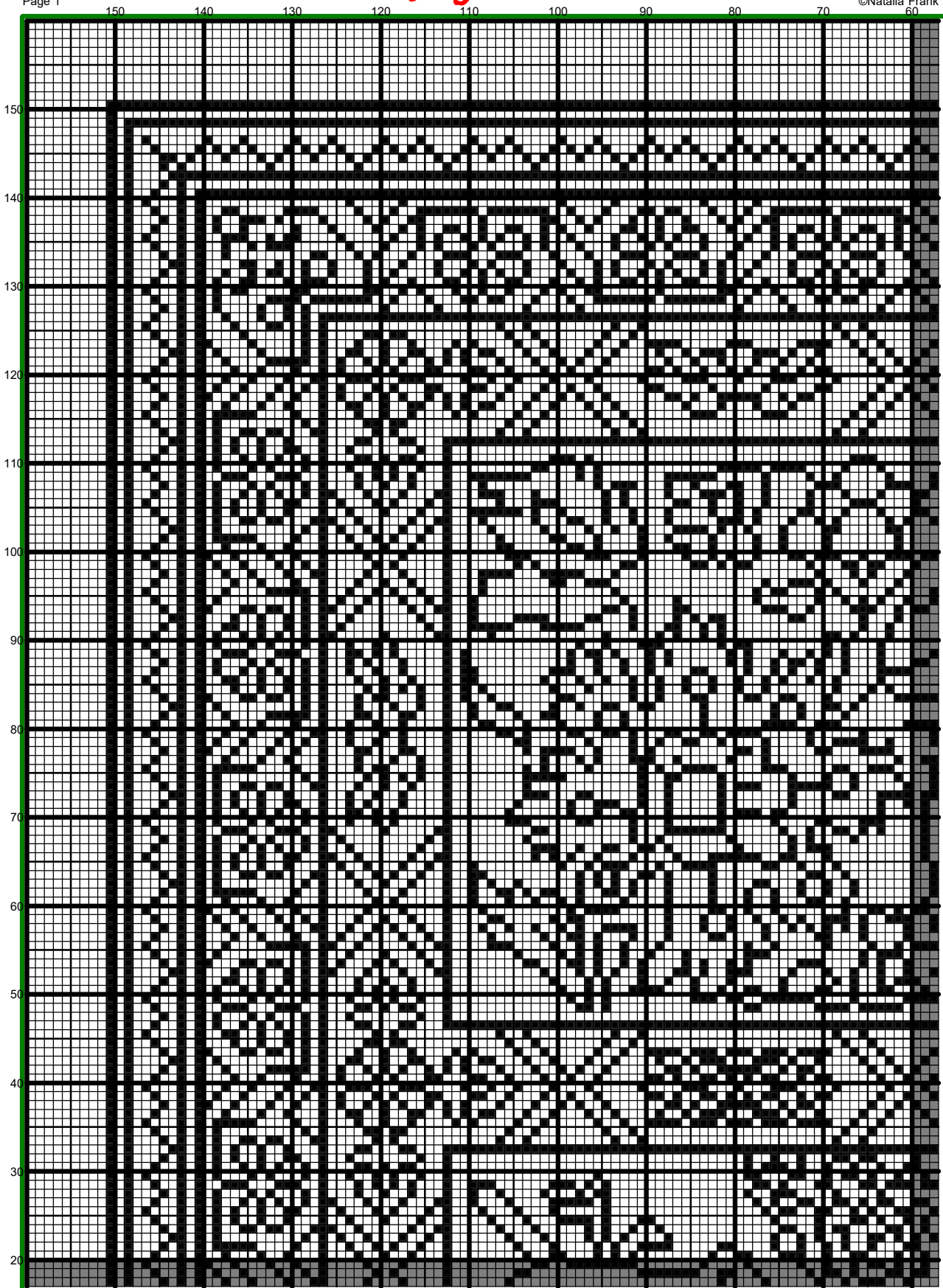


**Design size:** 6.06 x 6.06 inches or 15.39 x 15.39 cm  
[www.dollhouseneedlepoint.com](http://www.dollhouseneedlepoint.com)

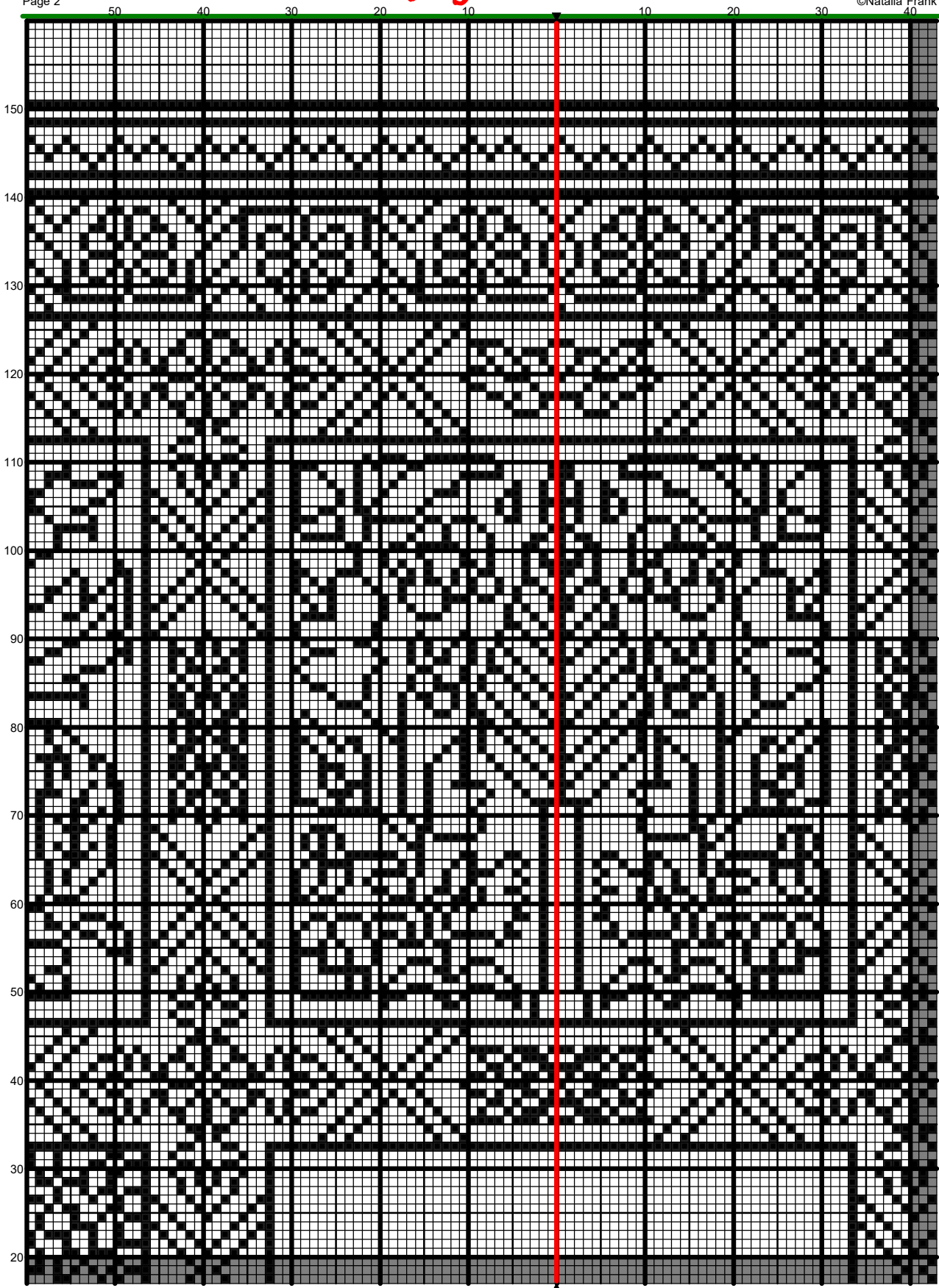
# MAY 2021

Page 1

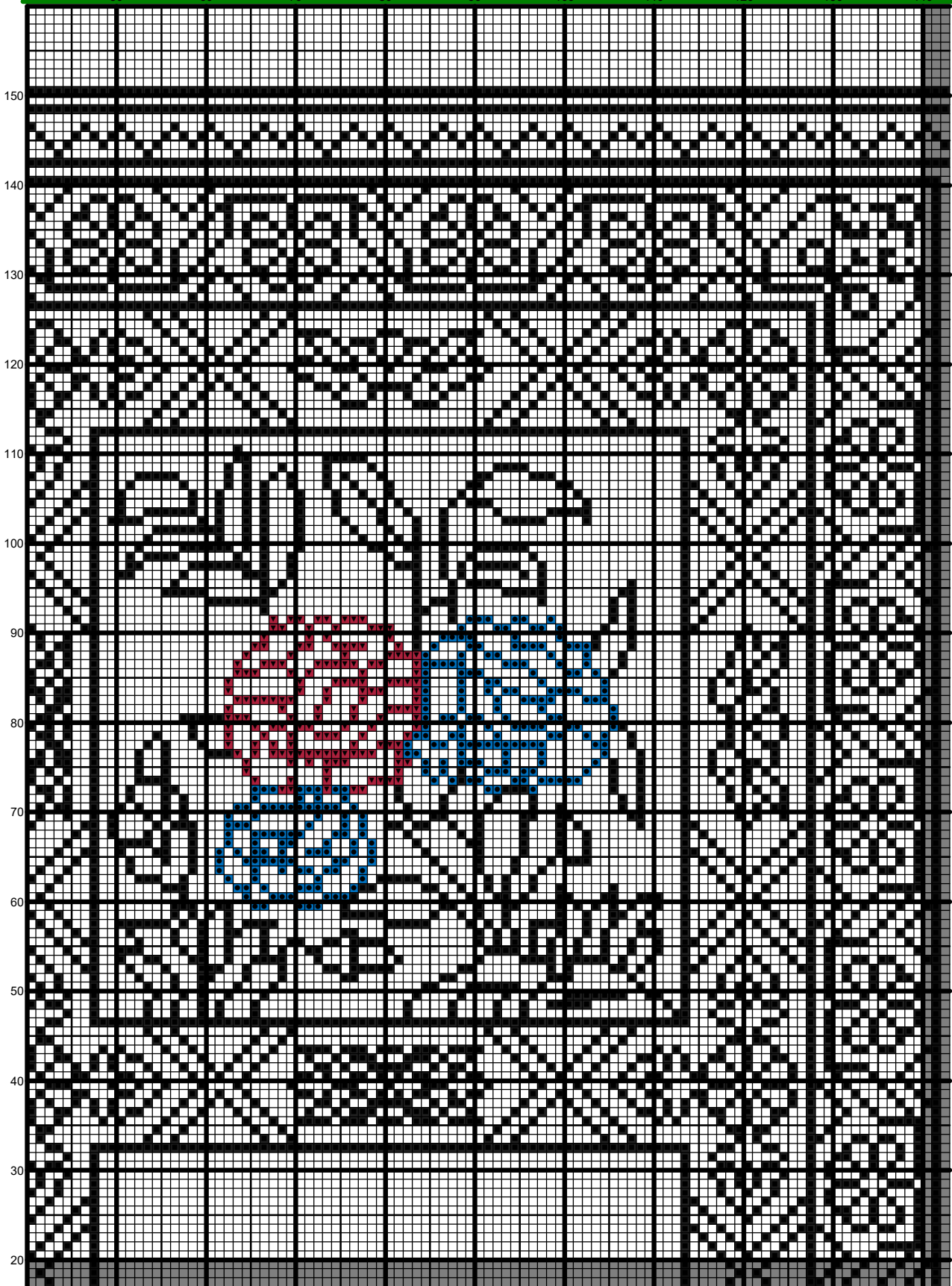
©Natalia Frank



# MAY 2021

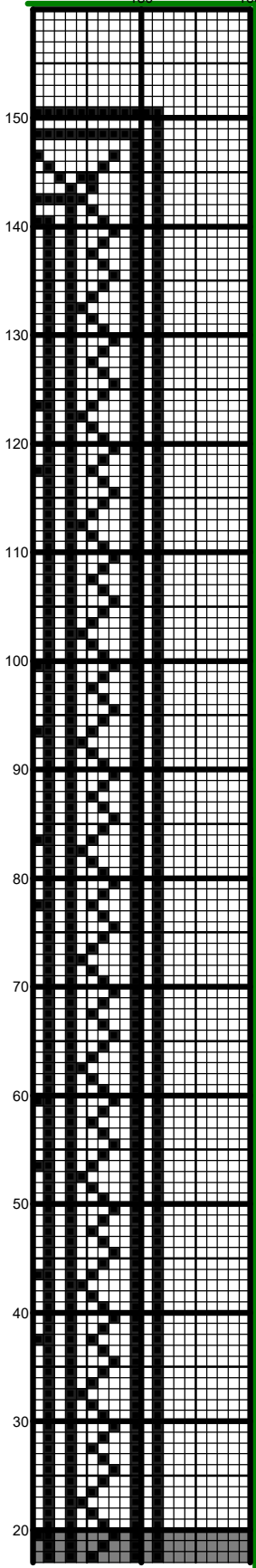


# MAY 2021



# MAY 2021

Page 4 ©Natalia Frank 150 160



# MAY 2021

Page 5

150

140

130

120

110

100

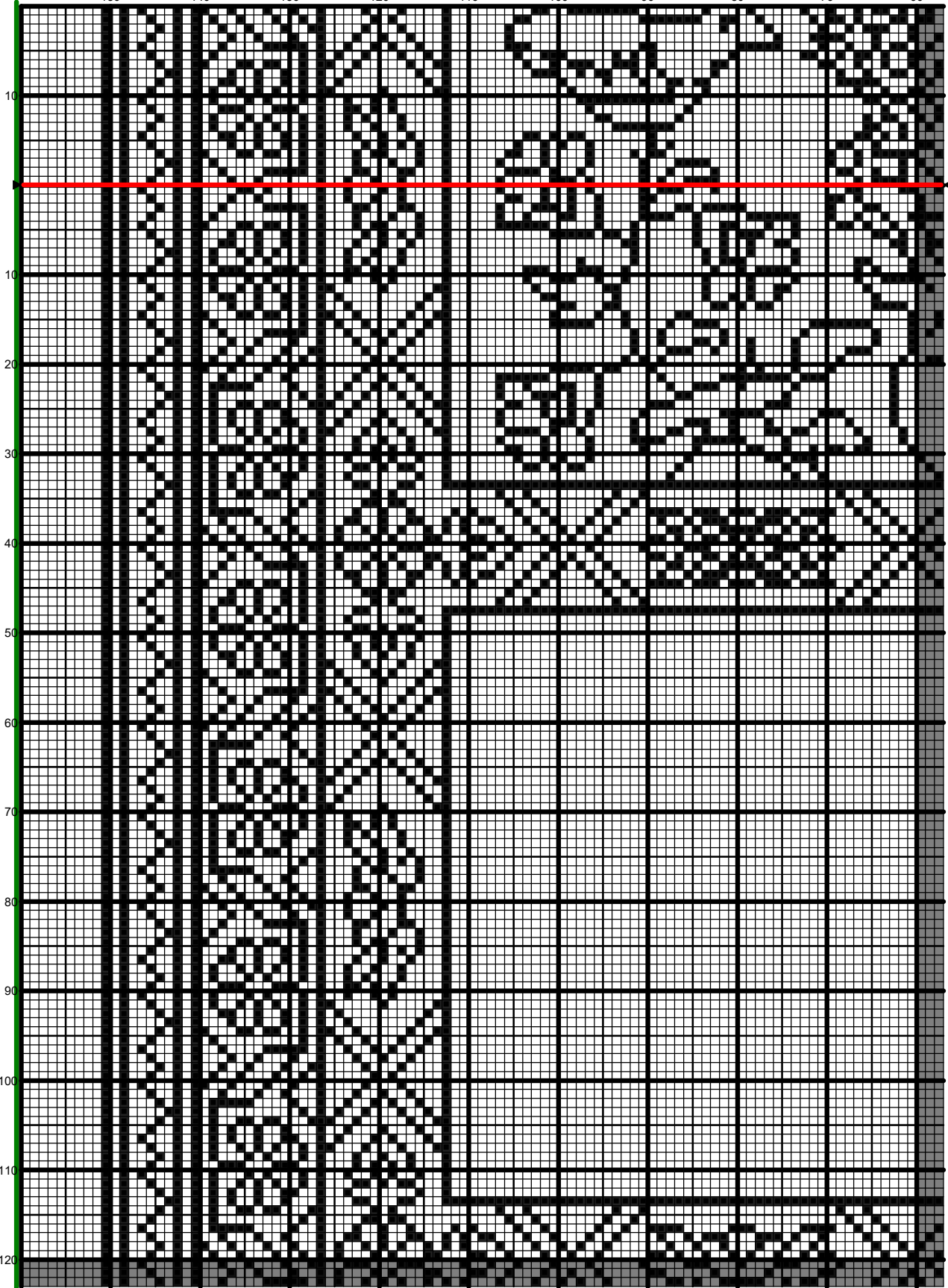
90

80

70

©Natalia Frank

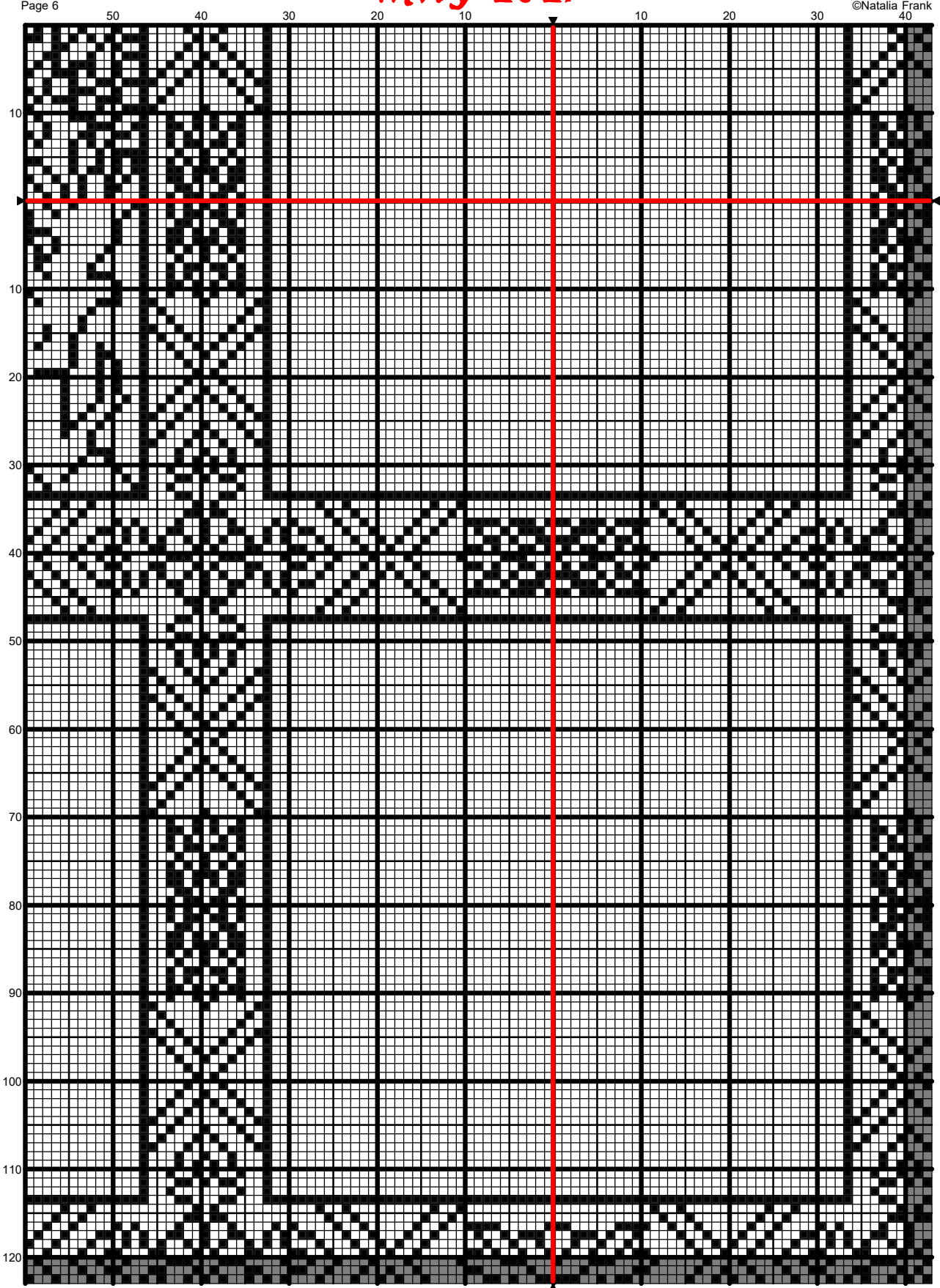
60



# MAY 2021

Page 6

©Natalia Frank





# MAY 2021

Page 7

50

60

70

80

90

100

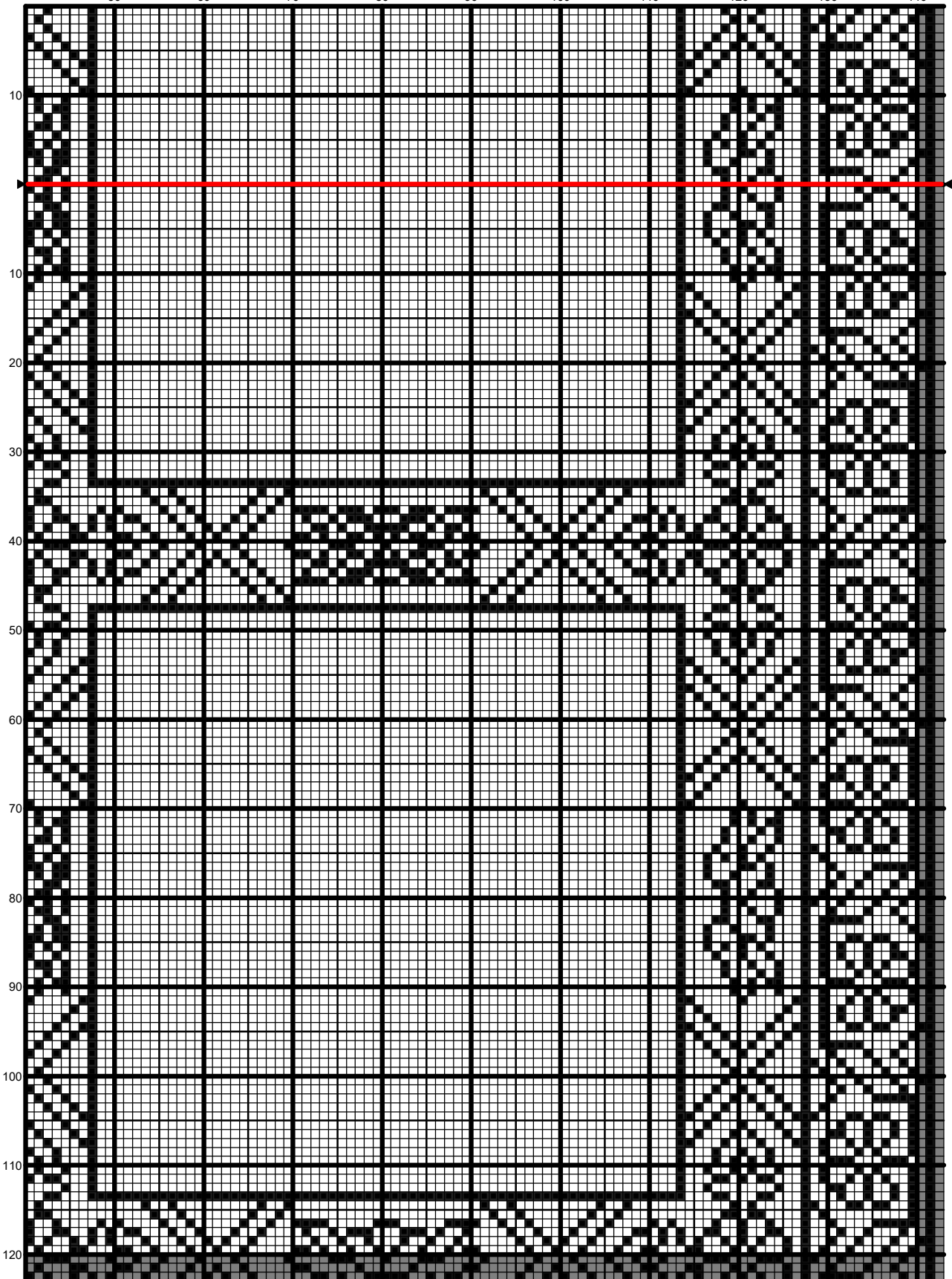
110

120

130

©Natalia Frank

140



10

10

20

30

40

50

60

70

80

90

100

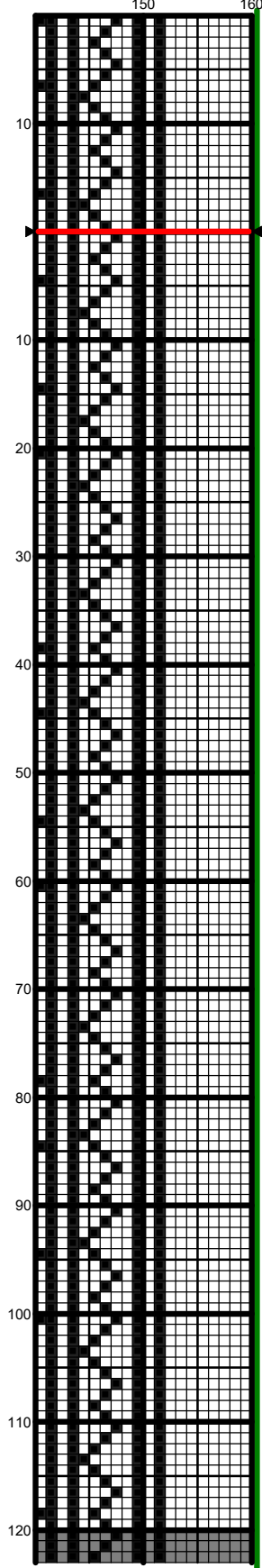
110

120



# MAY 2021

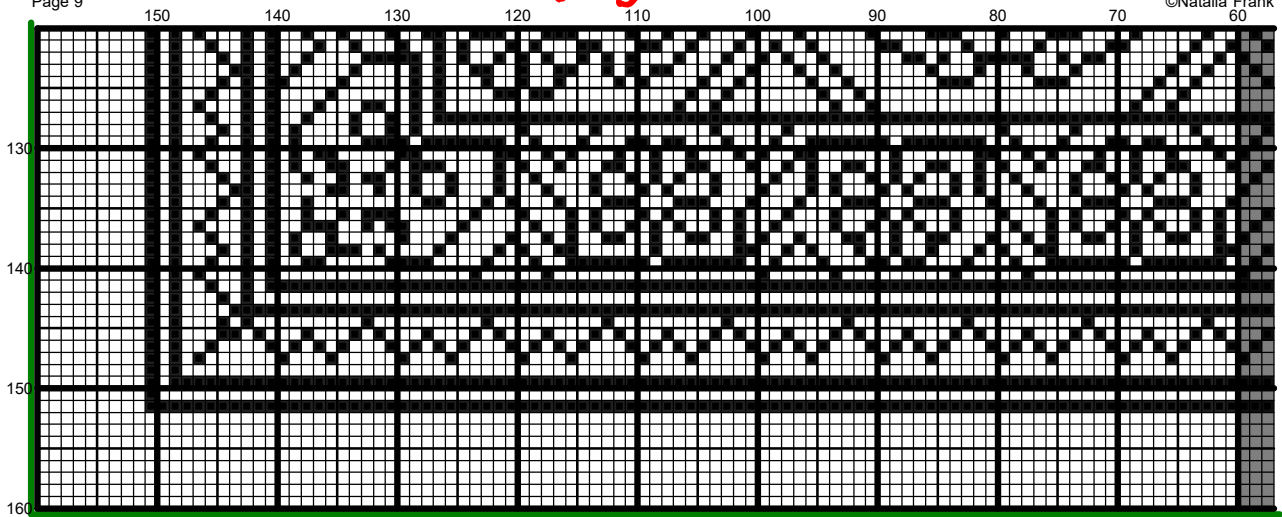
Page 8 ©Natalia Frank



# MAY 2021

Page 9

©Natalia Frank



# MAY 2021

Page 10

50

40

30

20

10

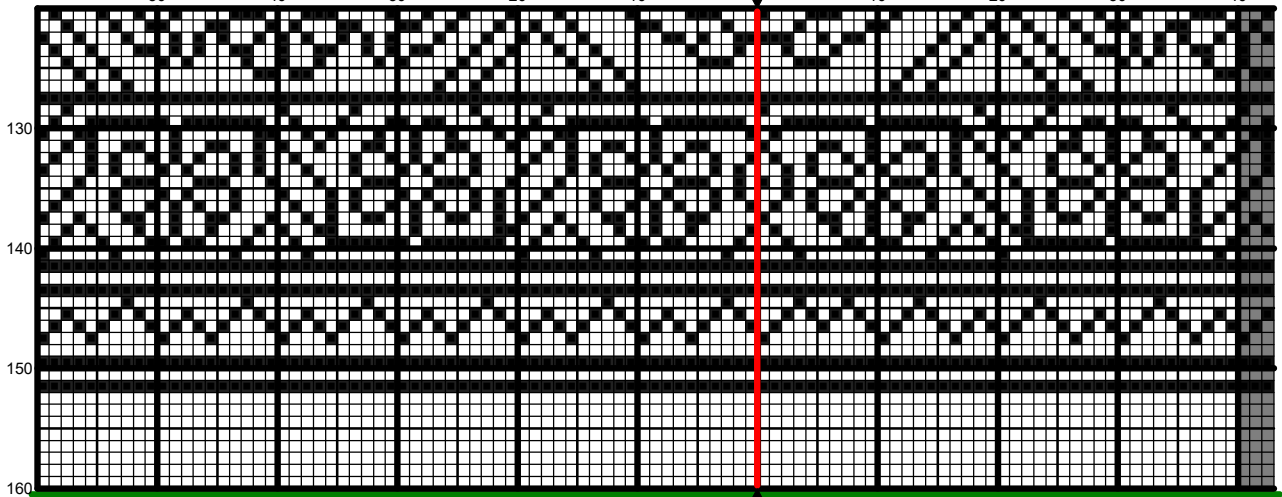
10

20

30

©Natalia Frank

40



# MAY 2021

Page 11

50

60

70

80

90

100

110

120

130

©Natalia Frank

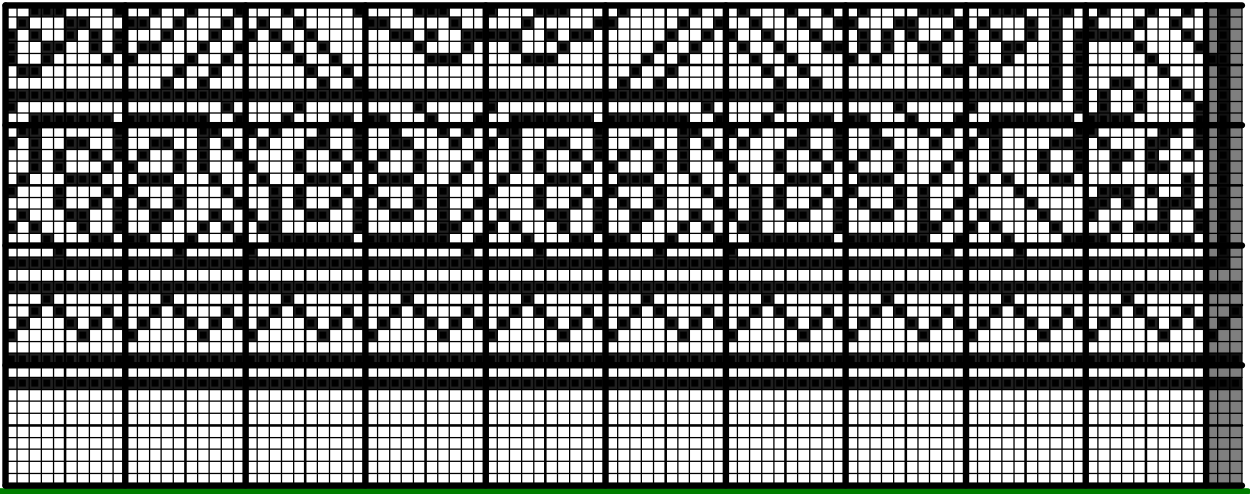
140

130

140

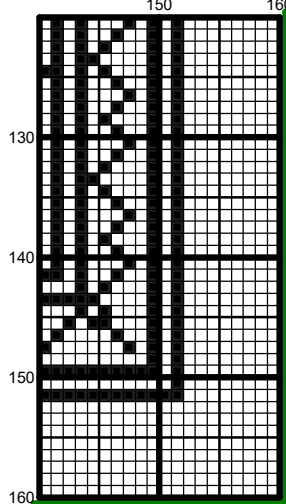
150

160



# MAY 2021

Page 12 ©Natalia Frank



## Instructions and Symbol Key for Design "MAY 2021"

---

**Fabric:** 50 count Aida

**Stitches:** 303 x 303      **Size:** 6.06 x 6.06 inches or 15.39 x 15.39 cm

**Colours:** DMC

<u>Sym</u>	<u>No.</u>	<u>Colour Name</u>	<u>Sym</u>	<u>No.</u>	<u>Colour Name</u>
■	310	Black	■	995	Carribbean blue
▼	309	Dark raspberry rose			

This chart has been designed and printed with our best intentions of being without mistakes. However, the possibility of human error, printing mistakes or the variation of individual stitching does exist, and we regret that we cannot be responsible for this.

Note: The shaded blocks on the chart represent overlapping stitches.

Copyright © ©Natalia Frank 2021 All rights reserved.  
ONLY FOR PERSONAL USE